

Our sustainability highlights

Creating value



ELVALHALCOR

HELLENIC COPPER AND ALUMINIUM INDUSTRY S.A.



A leading global industrial producer of aluminium and copper products

ElvalHalcor currently holds a leading position in Europe in the copper tubes sector, while also having established its leading position within the global aluminum rolling industry.

 www.elvalhalcor.com



15 State-of-the-art
production plants
in 4 countries



Reliable & dynamic
aluminium
solutions provider



Copper tubes plant
most efficient in
Europe and biggest
in EMEA region



Innovative
products

**ElvalHalcor Group
at a glance**
(2019 consolidated key figures)

2,045
EUR million
revenue

1,883
EUR million
total exports

80+
years'
experience

92%
total exports

164
EUR million
capital
expenditure plan



**Market leader
in Europe
(in copper tubes
industry)**



**Strong export
orientation, sales in
100 countries**



**Continuous
investments in
R&D&I and
technology**



**Customer-
focused
philosophy**



Aluminium segment

ElvalHalcor's aluminium rolling division includes Elval (aluminium rolling division of ElvalHalcor) and six more key manufacturing companies.



ELVAL
HELLENIC ALUMINIUM INDUSTRY

ALUMINIUM ROLLING DIVISION of:



ELVALHALCOR
HELLENIC COPPER AND ALUMINIUM INDUSTRY S.A.

ELVAL COLOUR

SYMETAL
ALUMINIUM FOIL INDUSTRY S.A.

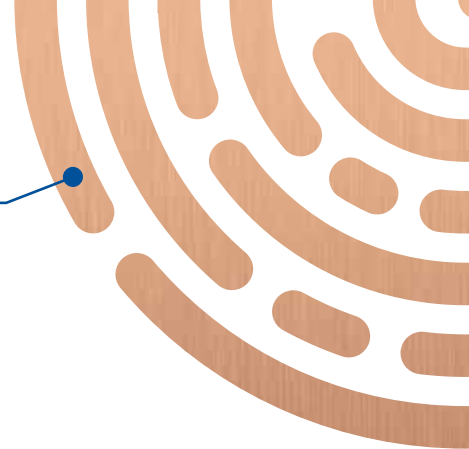
ANCOXAL

VEPAL

VIOMAL S.A.

UACJ

 **ELVALHALCOR**
HELLENIC COPPER AND ALUMINIUM INDUSTRY S.A.



Copper segment

The copper segment of ElvalHalcor consists of Halcor (copper tubes segment of ElvalHalcor) and six more key manufacturing companies.



HALCOR

HELLENIC COPPER INDUSTRY

COPPER TUBES DIVISION of:



ELVALHALCOR

HELLENIC COPPER AND ALUMINIUM INDUSTRY S.A.

SOFIA MED

FITCO
METALWORKS S.A.

HC
METALWORKS S.A.

NedZink



CABLE WIRES
HELLENIC WIRES INDUSTRY SINGLE MEMBER SOCIETE ANONYME

EPIRUS
METALWORKS

State-of-the-art production plants

High added-value products

Aluminium rolling division - Elval



Sustainable solutions and aluminium products in dynamically developing markets such as packaging (food and beverages), transportation, construction, heating, cooling and air conditioning (HVAC&R) and Renewable Energy Resources (RES).



Capacity: 292,500 tons/year (expected to grow over 50% on completion of the new capital expenditure plan)



Certifications: ISO 9001:2015, ISO 14001:2015, ISO 45001:2018, IATF 16949:2016, ISO 50001:2011 and ASI Performance Standard

Copper tubes division - Halcor



Copper tubes plant: Innovative and high value-added copper tubes and solutions for markets such as transportation, construction, HVAC&R, industrial applications and Renewable Energy Resources (RES).



Capacity: 80,000 tons/year



Certifications: ISO 9001:2015, ISO 14001:2015, OHSAS 18001:2007, ISO 50001:2018



Foundry producing: semi-finished copper products (billets and slabs).



Capacity: 235,000 tons/year

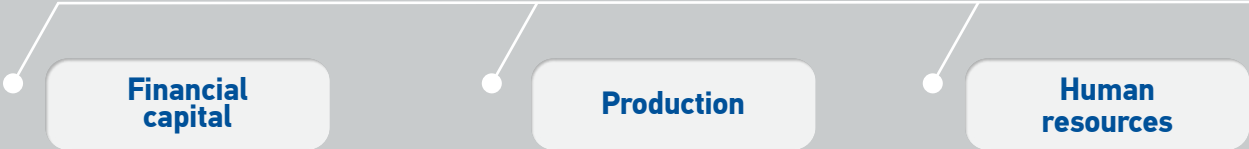


Certifications: ISO 9001:2015, ISO 14001:2015, OHSAS 18001:2007, ISO 50001:2018



Business Model

ElvalHalcor invests in sustainable development and contributes dynamically to the aluminum and copper value chain. With a strong focus on environmental protection and combat best practices for climate change, ElvalHalcor placing special emphasis on the circular economy model and the transition to the green economy new era.

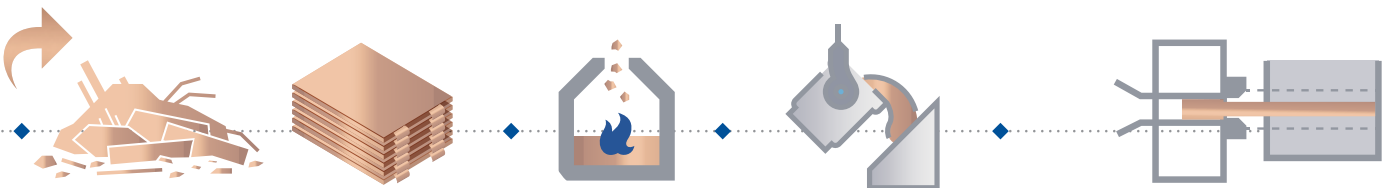
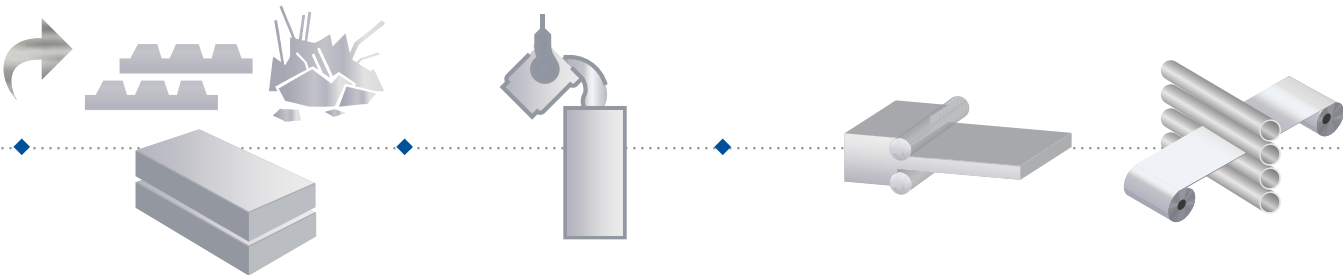


Aluminium rolling division - Elval

Raw materials:
(Primary Al, scrap Al,
slabs, etc.)

Casting: production
of slabs, continuous
casting rolls

Rolling:
hot - cold



Copper tubes division - Halcor

Raw materials:
(Cu cathodes,
Cu scrap)

Melting

Casting
(production of billets)

Extrusion



1,430
EUR million
revenue



47%
Copper scrap proportion to
total metal purchases. 13.3%
use of aluminium scrap



70.2
EUR million
employee wages
and benefits

Inputs

**Research and
innovation**

Environment

Society

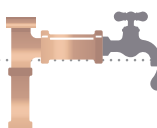
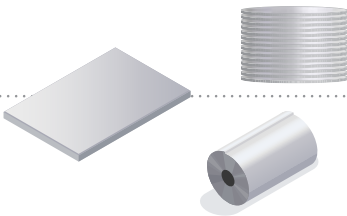
**Paint where required.
Finishing lines: cutting
sheets, strips, etc.**

**Semi-finished
aluminium products:
sheets, circ**

**Uses:
beverages and food packaging,
automotive industry
shipbuilding, construction**



Creating value



**Wall and
diameter
landings**

**Final phases (annealings,
Inner Grooved Tubes- IGT,
Level Wound Coils- LWC,
straighteners, insulation)**

Copper tubes for:

- heating, cooling for architectural and industrial applications
- water supply, heating, cooling for building applications



5.2

EUR million
for research, development
and innovation (R&D&I)



7.8

EUR million
expenditure for environ-
mental protection. **97%**
of the waste generated



1,309

EUR million
payments to national
suppliers. **235** EUR thousand
investments in society

Output

ElvalHalcor invests in Sustainable Development



We invest in our people

2.5% increase in workforce
(2019 vs 2018)

70.2 employee wages
and benefits
EUR million

72.3% of our people has age
profile under 50
(18 < age profile < 50)

18,972 total training
hours



Elval Academy



Environmental protection

7.8 our environmental
expenditures
and investments
EUR million

47% the copper scrap
proportion to total
metal purchases

>97% of the waste
generated is led
to recycling and
energy recovery

13% use of recycled
aluminium
scrap



focus on circular
economy programs



Wastewater
treatment
plant (ZLD)



promoting aluminium and copper recycling
(delacquering furnaces, CANAL
Aluminium Can Recycling Centre)



Circular economy in the
management of plastic waste (Halcor)

Creating shared value for all stakeholders



Economic growth

21

strong commercial
network in
21 countries

15

state-of-the-art production
plants in 4 countries

164
EUR million

capital expenditure
plan (in Greece)



Care for the society

56.2%

of our workforce
came from the
local communities

235

EUR thous.

our investments
in society

427.7

EUR million

payments to
national
suppliers



Customer-oriented approach



Elval's Technology
Center



Halcor's Tube Heat
Transfer Laboratory



ELKEME
HELLENIC RESEARCH CENTRE FOR METALS S.A.

Elkeme, Hellenic
Research Centre
for Metals closely
cooperates and
supports the technology
centres of
ElvalHalcor.



Certifications: ISO 9001:2015, ISO 14001:2015, ISO 50001:2018, ISO 45001:2018,
OHSAS 18001:2007, IATF 16949:2016 (Elval), ASI Performance Standard (Elval)

ElvalHalcor supports the UN

SUSTAINABLE DEVELOPMENT GOALS



ElvalHalcor's strategic approach includes equal growth opportunities and meritocratic development for all employees (SDG 5).

6



ElvalHalcor invests heavily in environmental protection projects. The Company also follows best practices and implements programmes that help to continuously improve ElvalHalcor's environmental performance. A typical example is the state-of-the-art waste water treatment plant (SDG 6).

7



ElvalHalcor (in 2019) managed to source 100% of their electricity needs from renewable sources in order to provide products with minimal carbon footprint and supporting the renewable energy market for further investments for the future (SDG 7).

8



We constantly invest in our human resources, focusing on continuous employee development (Elval Academy). In addition, great emphasis is provided in occupational health and safety (SDG 8).

4



ElvalHalcor seeks to support young people. Accordingly, we developed the "Boost your career" programme and implemented an extensive internship programme. Our aim, is to help young people develop professional knowledge and expertise – especially industry expertise (SDG 4).

12



ElvalHalcor promotes and actively implements the principles of the circular economy, constantly increasing, in the production of new products the use of aluminium and copper that comes from collecting products at the end of their life cycle. Recycling is carried out according to the most strict and modern standards, with high tech machines. Three delacquering furnaces operate at the Company's facilities today, with a technology that ensures environmentally friendly metal recycling. In addition, in the copper tubes division, has successfully activated a circular economy process dedicated to the management of plastic waste (SDG 12).

16



ElvalHalcor acknowledges the significance of business ethics and anti-corruption matters. In order to ensure the implementation of the respective policy, the Company has applied the proper internal controls and procedures of operation demonstrating accountability, fairness and transparency in the relationship between all stakeholders (SDG 16).

17



Elval created the Aluminium Can Recycling Centre (CANAL) to promote aluminium recycling in Greece. CANAL combines aluminium recycling (receives, buys and packages used aluminium cans, which it then forwards to Elval's plant in Oinofyta for recycling using environmentally friendly technology) with environmental information and raising awareness to pupils and the general public on recycling issues (SDG's 4, 17).
www.canal.gr